
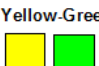

		<b>Loose Material</b>		Current Date 9/20/2004
		<b>01.0913a - M.E.P.CAD, Inc. - Training</b>		Date Required 6/5/2002
		<b>Assembly Area (Tree)</b>		PCU 6/24/2002
Quantity	Size	Description		
<b>Grooved Fittings</b>				
2	2 1/2"	Grooved Cap		
1	2 1/2"	Grooved Tee		
<b>Threaded Fittings</b>				
1	1"	Square Head Plug		
<b>Couplings</b>				
1	3 x 2 1/2"	Grooved Reducer Coupling		
8	2 1/2"	Grooved Rigid Coupling		
1	3"	Grooved Rigid Coupling		
<b>Sprinklers</b>				
80	1/2"	1/2" orifice, 212° F, Brass (Upright)		
<b>Hanger Material</b>				
38	1"	All Thread Rod, Black		
65	3/8 x 1'-0"	All Thread Rod, Black (Pre-Cut)		
76	3/8"	Hex Nut		
76	3/8"	Model 300 Michigan Top Beam C-Clamp		
76	12"	Retainer Strap		
33	1"	Swivel Ring		
32	1 1/2"	Swivel Ring		

		<b>Threaded Branchline Report</b>			Current Date 9/20/2004
		<b>01.0913a - M.E.P.CAD, Inc. - Training</b>			Date Required 6/5/2002
		<b>Assembly Area (Tree)</b>			PCU 6/24/2002
Quantity	Description	Length	End Prep	Fitting	Piece
<b>Outriggers</b>					
Line: #1					
8	1-Pipe, Schedule 30	6'-8"	T-T	1 x 1 x 1/2 Thrd Red T	C
8	1-Pipe, Schedule 30	5'-10 1/2"	T-T	1 x 1/2 Thrd Red 90	D
8	1 1/2-Pipe, Schedule 30	7'-8"	T-T	1 1/2 x 1 x 1/2 Thrd Red T	B
8	1 1/2-Pipe, Schedule 30	5'-8"	T-T	1 1/2 x 1 1/2 x 1/2 Thrd Red T	A
Line: #2					
1	1-Pipe, Schedule 30	8'-8"	T-T	1 x 1 x 1/2 Thrd Red T	F
1	1-Pipe, Schedule 30	7'-11 1/2"	T-T	1 Valve, T-T Globe	H
1	1-Pipe, Schedule 30	7'-8"	T-T	1 x 1 x 1/2 Thrd Red T	E
1	1-Pipe, Schedule 30	6'-4"	T-T	1 Thrd 90	I
1	1-Pipe, Schedule 30	3'-11 1/2"	T-T	1 Thrd 90	G
1	1-Pipe, Sch				
1	1 1/2-Pipe, S				
1	1 1/2-Pipe, S				
1	1 1/2-Pipe, S				
1	1 1/2-Pipe, S				
Line: #3					
7	1-Pipe, Sch				
7	1-Pipe, Sch				
7	1 1/2-Pipe, S				
7	1 1/2-Pipe, S				
7	1 1/2-Pipe, S				
7	1 1/2-Pipe, S				

### Optional Reports

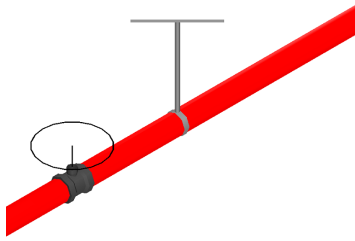
Besides the Threaded Pipelines report on the previous page, other optional threaded reports are available to suit most every fabrication need.

		<b>Threaded Fabrication Report - By Size</b>			Current Date 9/20/2004	
		<b>01.0913a - M.E.P.CAD, Inc. - Training</b>			Date Required 6/5/2002	
		<b>Assembly Area (Tree)</b>			PCU 6/24/2002	
Line	Description	Quantity	Length	End Prep	Fitting	Piece
<b>Size: 1</b>						
#1	Pipe, Schedule 30	8	6'-8"	T-T	1 x 1 x 1/2 Thrd Red T	C
#1	Pipe, Schedule 30	8	5'-10 1/2"	T-T	1 x 1/2 Thrd Red 90	D
#2	Pipe, Schedule 30	1	7'-8"	T-T	1 x 1 x 1/2 Thrd Red T	E
#2	Pipe, Schedule 30	1	8'-8"	T-T	1 x 1 x 1/2 Thrd Red T	F
#2	Pipe, Schedule 30	1	3'-11 1/2"	T-T	1 Thrd 90	G
#2	Pipe, Schedule 30	1	7'-11 1/2"	T-T	1 Valve, T-T Globe	H
#2	Pipe, Schedule 30	1	6'-4"	T-T	1 Thrd 90	I
#2	Pipe, Schedule 30	1	1'-4 1/2"	T-T	1 Thrd 45	J
#3	Pipe, Schedule 30	7	7'-8"	T-T	1 x 1 x 1/2 Thrd Red T	E
#3	Pipe, Schedule 30	7	8'-8"	T-T	1 x 1/2 Thrd Red 90	F

		<b>Threaded Fabrication Report</b>			Current Date 9/20/2004	
		<b>01.0913a - M.E.P.CAD, Inc. - Training</b>			Date Required 6/5/2002	
		<b>Assembly Area (Tree)</b>			PCU 6/24/2002	
Length	Description	Quantity	End Prep	Fitting	Line	Piece
<b>Size: 1</b>						
8'-8"	Pipe, Schedule 30	1	T-T	1 x 1 x 1/2 Thrd Red T	#2	F
8'-8"	Pipe, Schedule 30	7	T-T	1 x 1/2 Thrd Red 90	#3	F
7'-11 1/2"	Pipe, Schedule 30	1	T-T	1 Valve, T-T Globe	#2	H
7'-8"	Pipe, Schedule 30	1	T-T	1 x 1 x 1/2 Thrd Red T	#2	E
7'-8"	Pipe, Schedule 30	7	T-T	1 x 1 x 1/2 Thrd Red T	#3	E
6'-8"	Pipe, Schedule 30	8	T-T	1 x 1 x 1/2 Thrd Red T	#1	C
6'-4"	Pipe, Schedule 30	1	T-T	1 Thrd 90	#2	I
5'-10 1/2"	Pipe, Schedule 30	8	T-T	1 x 1/2 Thrd Red 90	#1	D
3'-11 1/2"	Pipe, Schedule 30	1	T-T	1 Thrd 90	#2	G
1'-4 1/2"	Pipe, Schedule 30	1	T-T	1 Thrd 45	#2	J
<b>Size: 1 1/2</b>						
7'-8"	Pipe, Schedule 30	1	T-T	1 1/2 x 1 x 1/2 Thrd Red T	#2	D
7'-8"	Pipe, Schedule 30	1	T-T	1 1/2 x 1 1/2 x 1/2 Thrd Red T	#2	C
7'-8"	Pipe, Schedule 30	7	T-T	1 1/2 x 1 x 1/2 Thrd Red T	#3	D
7'-8"	Pipe, Schedule 30	7	T-T	1 1/2 x 1 1/2 x 1/2 Thrd Red T	#3	C
7'-8"	Pipe, Schedule 30	8	T-T	1 1/2 x 1 x 1/2 Thrd Red T	#1	B
7'-8"	Pipe, Schedule 30	1	T-T	1 1/2 x 1 1/2 x 1/2 Thrd Red T	#2	B
7'-8"	Pipe, Schedule 30	7	T-T	1 1/2 x 1 1/2 x 1/2 Thrd Red T	#3	B
5'-8"	Pipe, Schedule 30	8	T-T	1 1/2 x 1 1/2 x 1/2 Thrd Red T	#1	A
<b>Size: 1 1/4</b>						
3'-7"	Pipe, Schedule 30	1	T-T	1 1/4 x 1 1/4 x 1 1/4 Thrd Red T (Bull Head)	RN8	A
3'-4"	Pipe, Schedule 30	1	T-T	1 1/4 x 1 1/4 x 1 1/4 Thrd Red T (Bull Head)	RN7	A
3'-1"	Pipe, Schedule 30	1	T-T	1 1/4 x 1 1/4 x 1 1/4 Thrd Red T (Bull Head)	RN6	A
2'-10"	Pipe, Schedule 30	1	T-T	1 1/4 x 1 1/4 x 1 1/4 Thrd Red T (Bull Head)	RN5	A
2'-7"	Pipe, Schedule 30	1	T-T	1 1/4 x 1 1/4 x 1 1/4 Thrd Red T (Bull Head)	RN4	A



# Hanger Reports



Hangers can automatically be placed on the drawing and automatically be cut-to-fit. How the hangers are grouped on the stock list is a user-option.

Hanger Material Grouping

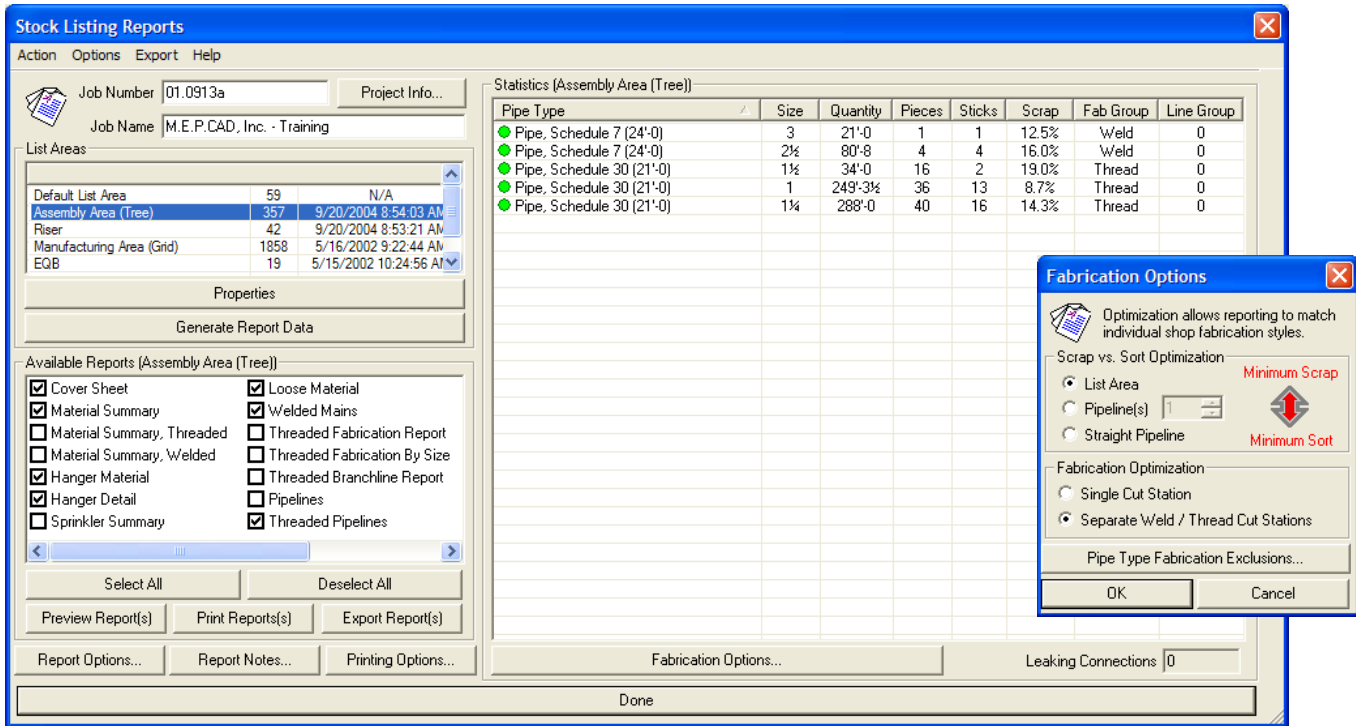
- List Area
- Each Pipeline Type
- Each Pipeline Group
- Each Pipeline

Orange-Black		Hanger Material		Current Date		
		01.0913a - M.E.P.CAD, Inc. - Training		9/19/2004		
		Assembly Area (Tree)		Date Required		
				6/5/2002		
				POJ		
				6/24/2002		
Hanger Material						
Quantity	Size	Description				
36-1	3/8	All Thread Rod, Black				
65	3/8 x 1'-0	All Thread Rod, Black (Pre-Cut)				
78	3/8	Hex Nut				
78	3/8	Model 300 Michigan Top Beam C-Clamp				
78	12	Retainer Strap				
33	1	Swivel Ring				
32	1 1/4	Swivel Ring				
8	2 1/2	Swivel Ring				
3	3	Swivel Ring				
78	3/8	Washer, Std				
Hanger List						
Quantity	Size	Hanger	Rod Size	Rod Length	Span	T Type
33	1	Inverted TB C-Clamp w/Ret. - Joist	3/8	1'-0 Pre-Cut	N/A	15S
32	1 1/4	Inverted TB C-Clamp w/Ret. - Joist	3/8	1'-0 Pre-Cut	N/A	15S
1	2 1/2	Inverted TB C-Clamp w/Ret. - Joist	3/8	3'-3	N/A	15S
1	2 1/2	Inverted TB C-Clamp w/Ret. - Joist	3/8	3'-6	N/A	15S
1	2 1/2	Inverted TB C-Clamp w/Ret. - Joist	3/8	3'-9	N/A	15S
1	2 1/2	Inverted TB C-Clamp w/Ret. - Joist	3/8	4'-0	N/A	15S
1	2 1/2	Inverted TB C-Clamp w/Ret. - Joist	3/8	4'-0	N/A	15S

Orange-Black		Hanger Detail		Current Date
		01.0913a - M.E.P.CAD, Inc. - Training		9/19/2004
		Assembly Area (Tree)		Date Required
				6/5/2002
				POJ
				6/24/2002
Top Beam Clamp		Inverted TB C-Clamp w/Ret. - Joist		Construction: Steel
Component	Size	Quantity		
<b>Size: 1</b>				
Quantity: 33	Rod Length: 1'-0 Pre-Cut			
	All Thread Rod, Black	3/8	Variable	
	Hex Nut	3/8	1	
	Model 300 Michigan Top Beam C-Clamp	3/8	1	
	Retainer Strap	12	1	
	Swivel Ring	1	1	
	Washer, Std	3/8	1	
<b>Size: 1 1/4</b>				
Quantity: 32	Rod Length: 1'-0 Pre-Cut			

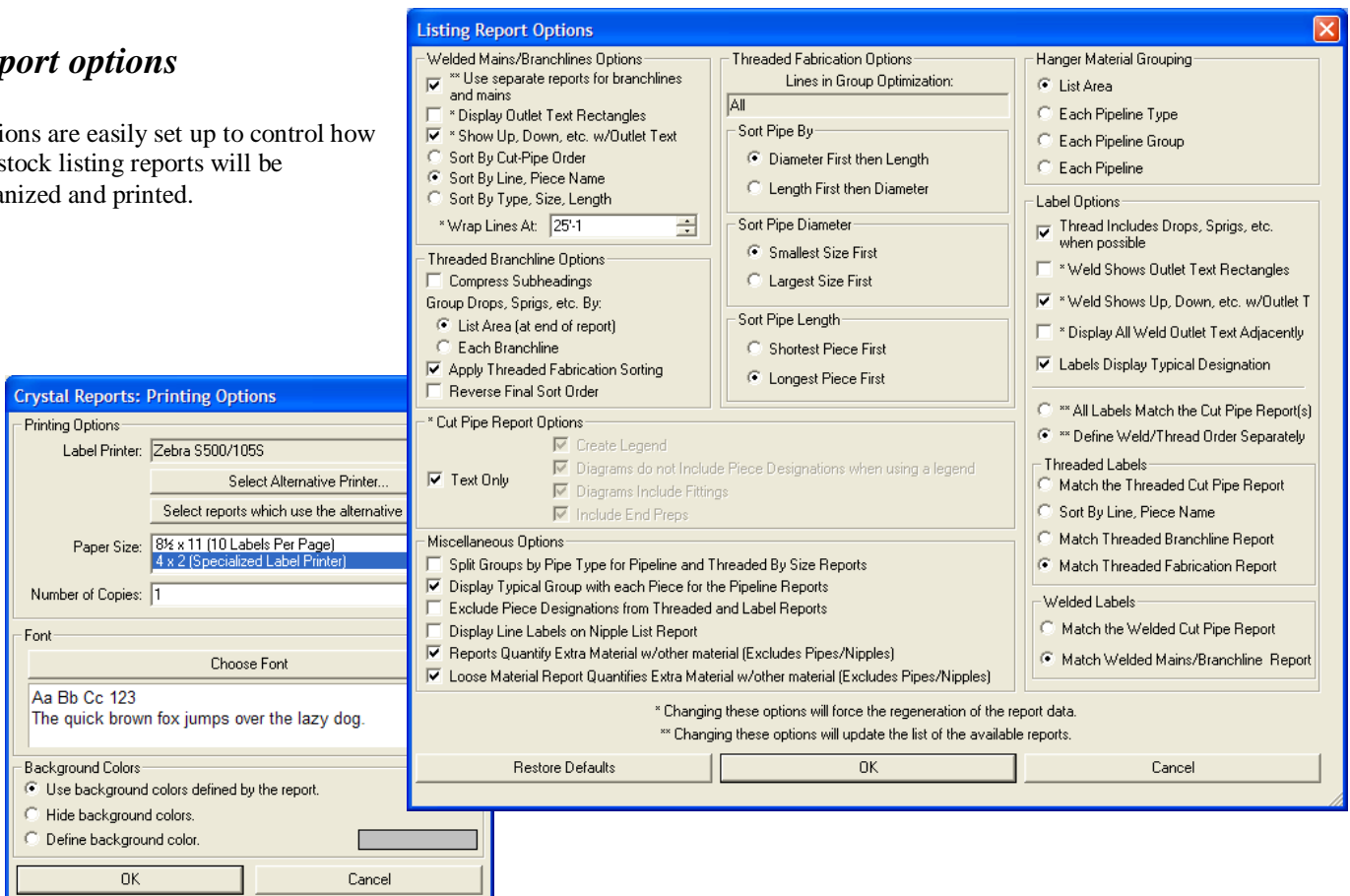
Depending on the system components being listed, there are usually 21 different Stock Listing reports available for printing. You need only select the reports that fit your requirements. These reports can then be previewed, printed, faxed &/or exported to other formats such as MSWord, PDF, Excel, etc.

AutoLIST allows you to break your drawing into differing list areas for complete control of how system components get listed; and what gets shipped with what and when.



## Report options

Options are easily set up to control how the stock listing reports will be organized and printed.

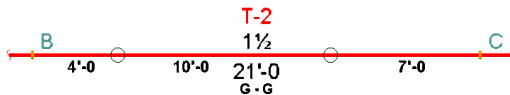


## Fabrication Standards

General fabrication standards are established within the drawing so that AutoSPRINK VR and AutoLIST will automatically build and list the pipes, fitting and outlets the way you want. These general standards are simply your directions to the program. You are still free to do anything you need to do.

## T-Numbers

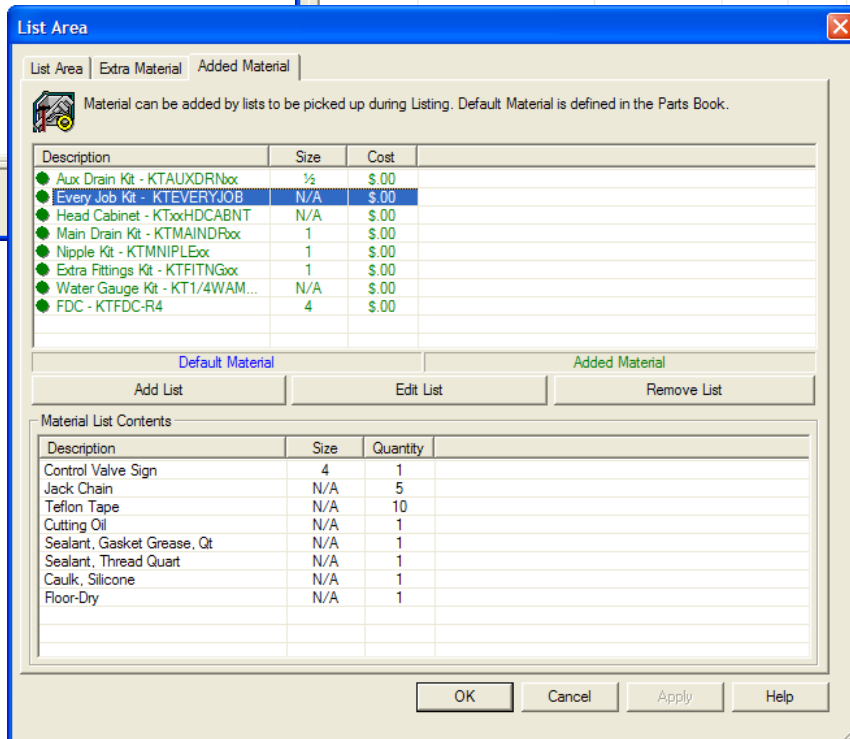
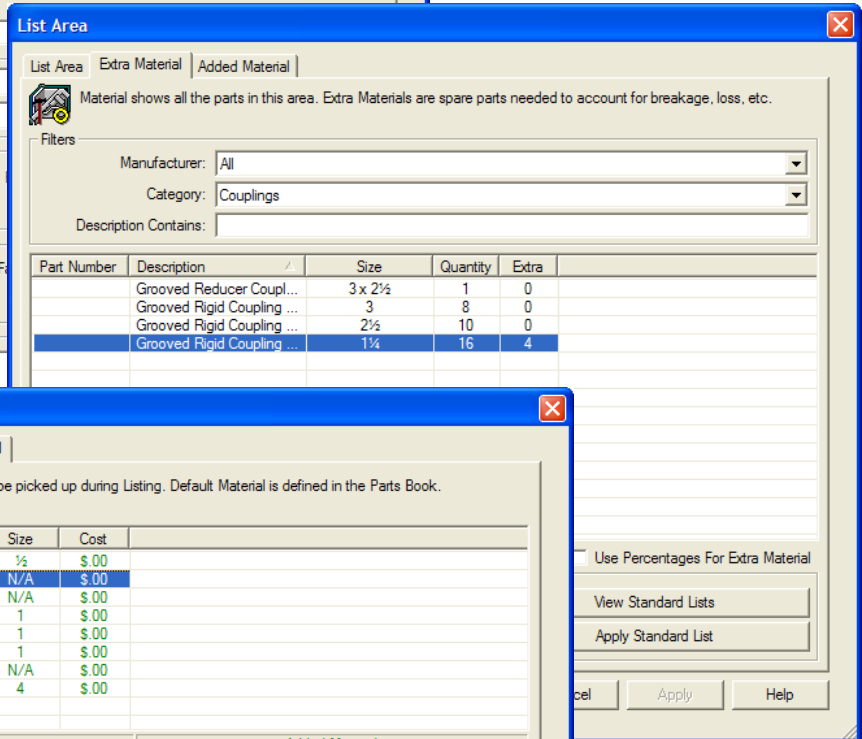
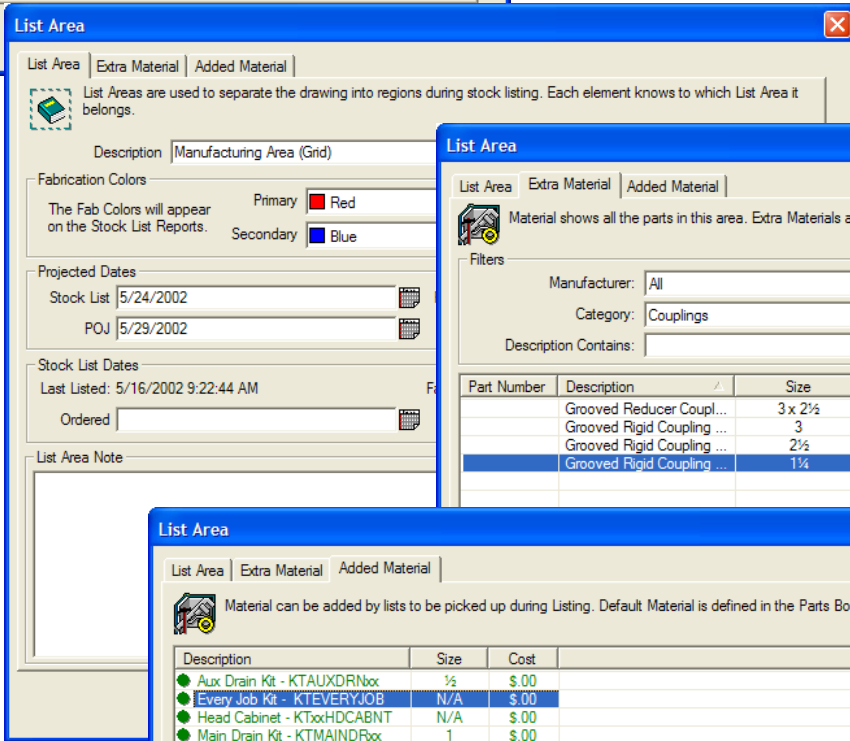
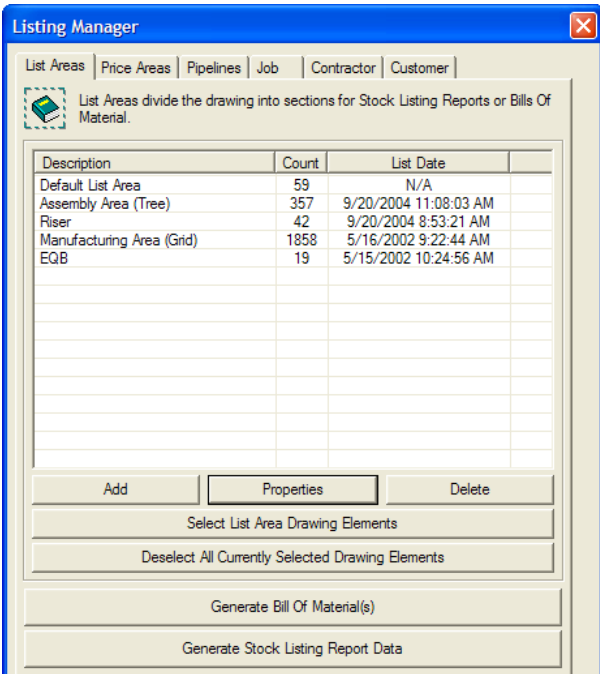
When there are numerous typical pipes within a system, you might prefer them to be grouped together on the list instead of listing them by individual Line Number



Red-Black		Welded Branchlines - Fabrication Report		Current Date
		01.0913a - M.E.P.CAD, Inc. - Training		9/21/2004
		Gridded Piping		Date Required
				PO
Typical Piece: T-1	Quantity: 20	1 1/4 - SCH 30	21'-0	G-G
Typical Piece: T-2	Quantity: 20	1 1/4 - SCH 30	21'-0	G-G
Typical Piece: T-3	Quantity: 20	1 1/4 - SCH 30	21'-0	G-G

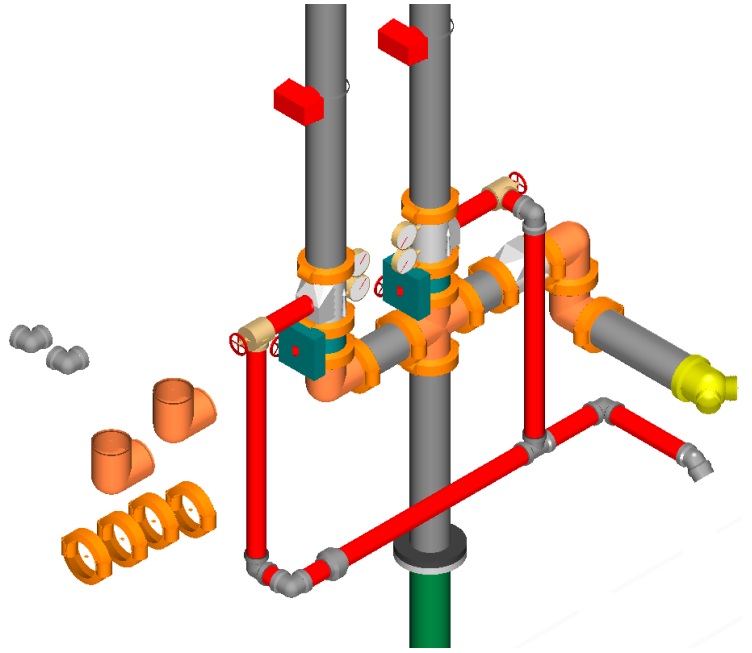
## Extra or added materials

The Properties of individual List Areas can be edited to include Fabrication Colors (color coding), dates, etc.. The quantities of listed materials from the drawing can be increased to accommodate anticipated job conditions. Or, added material can be included on the list to be certain that the field has everything that is needed for a complete installation.



## Add materials to the drawing

AutoLIST is probably the only CAD Stock Listing program in existence that will allow you to just scatter random material on the floor of the drawing and have it listing along with everything else!



## Other options

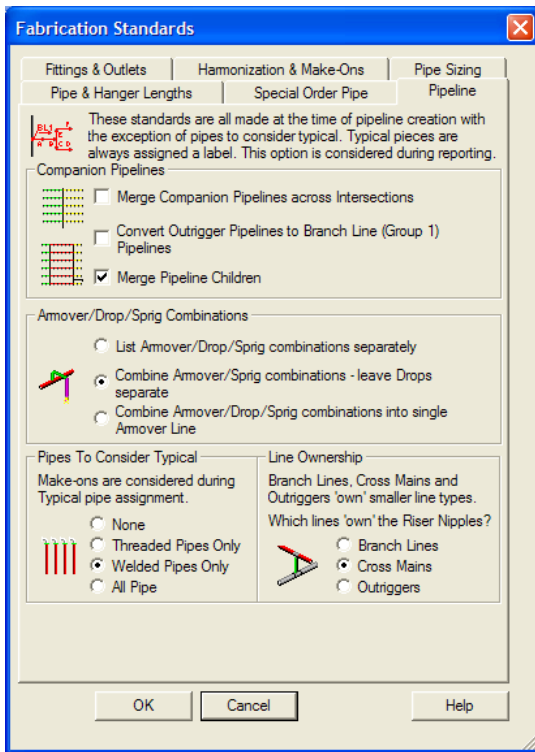
Contract Information	
Contractor: M.E.P.CAD, Inc.	Contact: Bill Richlin :
4544 W. Russell Road, Suite E	Phone: 702.380.3200
	FAX: 702.380.1275
Las Vegas, NV 89118	E-mail: bill@mepcad.com
	Web-Site: www.mepcad.com
Design Engineer: Bill Richlin	
Phone: 702.380.3200	
FAX: 702.380.1275	
Job Information	
Job Number: 01.0913a	List Area: Assembly Area (Tree)
Job Name: M.E.P.CAD, Inc. - Training	Last Listed: 9/20/2004
Customer: 300	Yellow-Green: <input type="checkbox"/> <input type="checkbox"/>
Customer Name: ABC Development Co.	Number of Heads: 80
Shipping Information	
Ship To: Assembly Plant - Bldg A	POJ: 6/24/2002
4544 W. Russell Road, suite E	
Las Vegas, NV 89118	
Ship Via: Local Truck	

Optional stock list Cover Sheet

Notes can be added to individual reports.

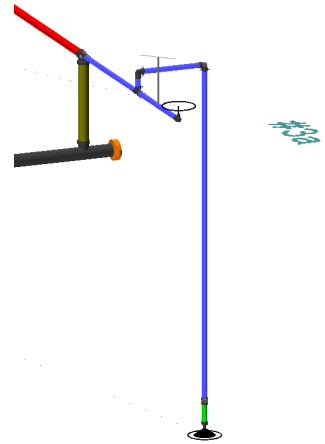
Report Title	Include Job Note	Include List Area...	Foot Note
Cover Sheet	<input checked="" type="checkbox"/>	<input type="checkbox"/>	Deliver before 7:00am
Material Summary	<input checked="" type="checkbox"/>	<input type="checkbox"/>	OT is required for delivery
Material Summary, Threaded	<input type="checkbox"/>	<input type="checkbox"/>	
Material Summary, Welded	<input type="checkbox"/>	<input type="checkbox"/>	
Stock Pickings	<input type="checkbox"/>	<input type="checkbox"/>	
Pipeline Configuration	<input type="checkbox"/>	<input type="checkbox"/>	
Hanger Material	<input type="checkbox"/>	<input type="checkbox"/>	
Hanger Detail	<input type="checkbox"/>	<input type="checkbox"/>	
Detail Material	<input type="checkbox"/>	<input type="checkbox"/>	
Sprinkler Summary	<input type="checkbox"/>	<input type="checkbox"/>	
Loose Material	<input type="checkbox"/>	<input type="checkbox"/>	
Nipple List	<input type="checkbox"/>	<input type="checkbox"/>	
Trim Packages	<input type="checkbox"/>	<input type="checkbox"/>	
Welded Mains	<input type="checkbox"/>	<input type="checkbox"/>	

Amend The Note for the selected report



## Line Numbering and Main Designations

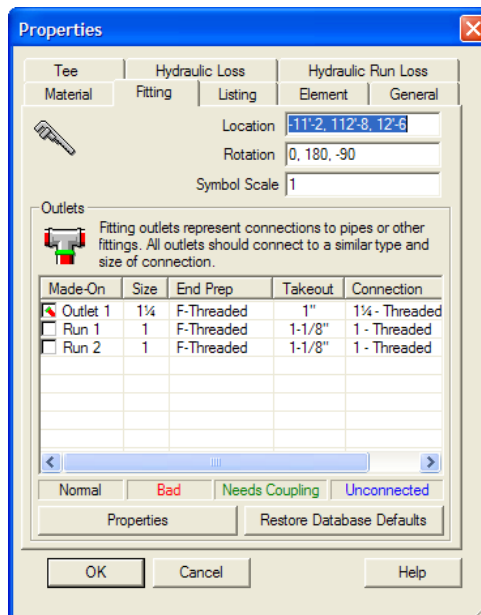
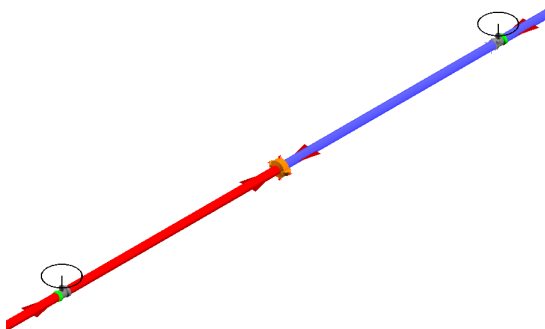
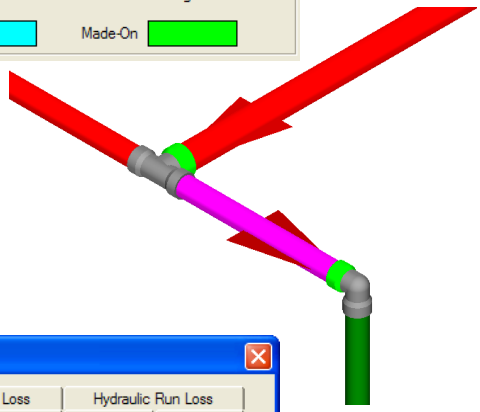
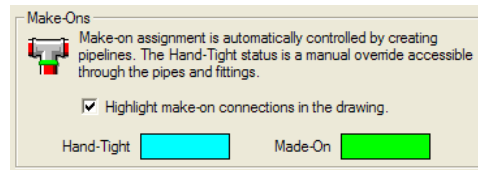
AutoSPRINK allows full user-control of how automatic Line Numbering and Main Designations is to treat piping configurations for stock listing. Line, Main, Segment, etc. designations can use any alpha-numeric combination of characters. The user also controls the number sequencing; and the numbers automatically placed can be changed manually to suite your needs.



## Automatic Fitting Make-Ons

All fitting assignments (make-ons) are automatic and have full display graphics to show exactly how fittings are being made-on.

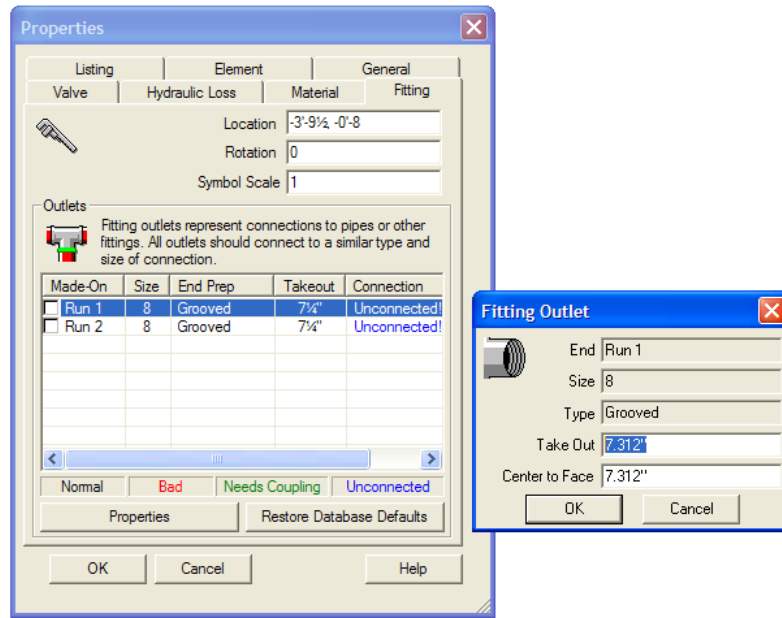
Automatic fitting Make-Ons can be changed automatically, semi-automatically or manually to suite any situation.



## Easily change fitting and valve take-outs

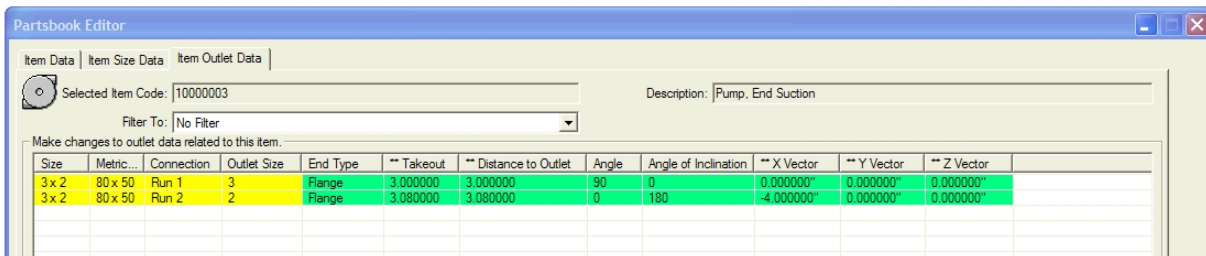
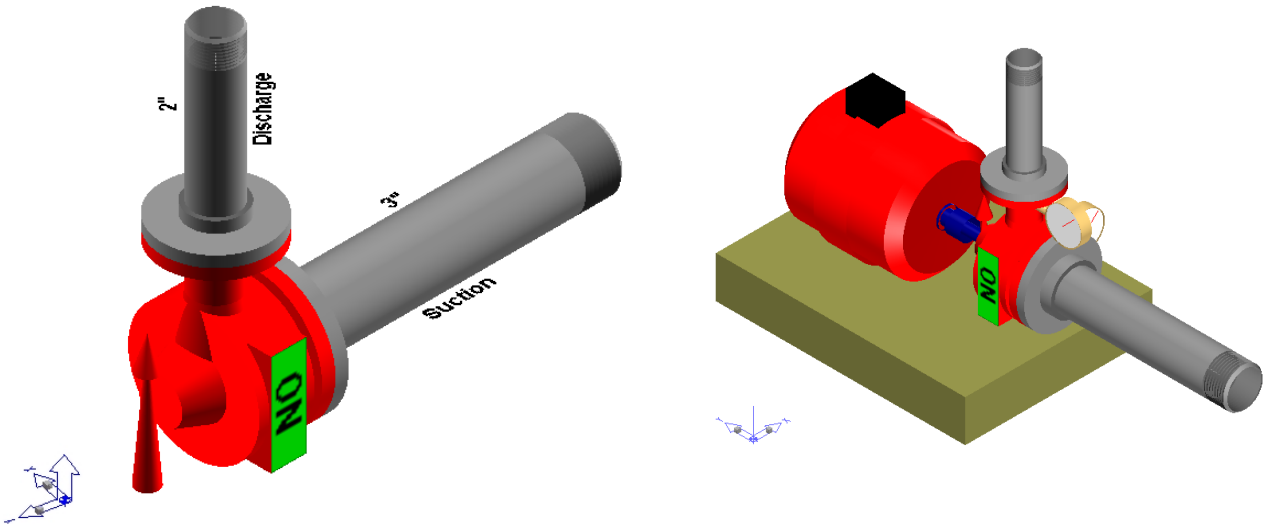
The take-outs used for fittings and valves can easily be modified to match a specific Manufacturer's data.

Changes can be made for individual elements within a drawing or the changes can be made in the database and globally applied to all drawing elements.



## Add specialty parts to the database

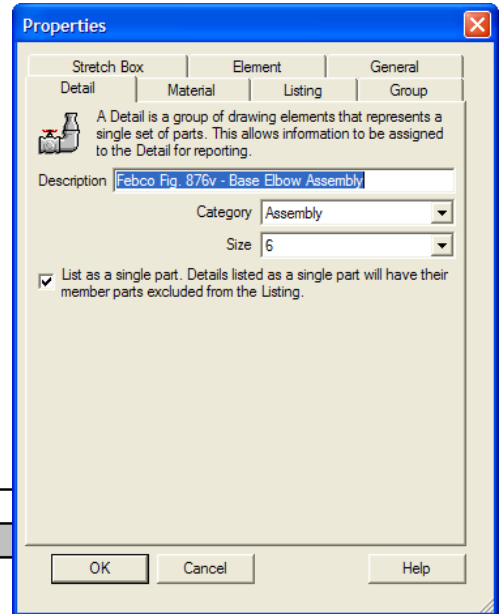
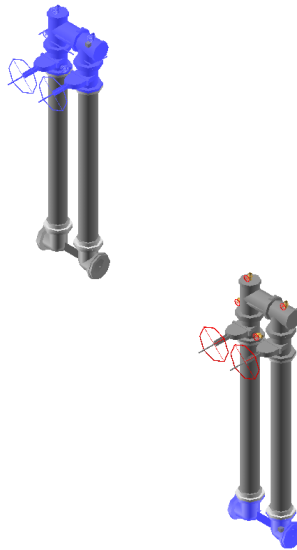
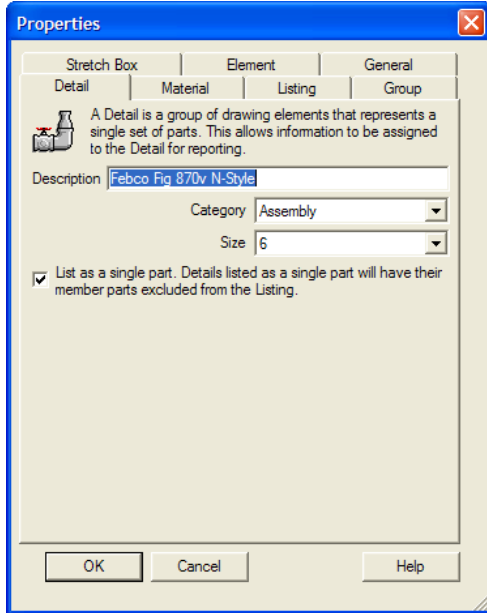
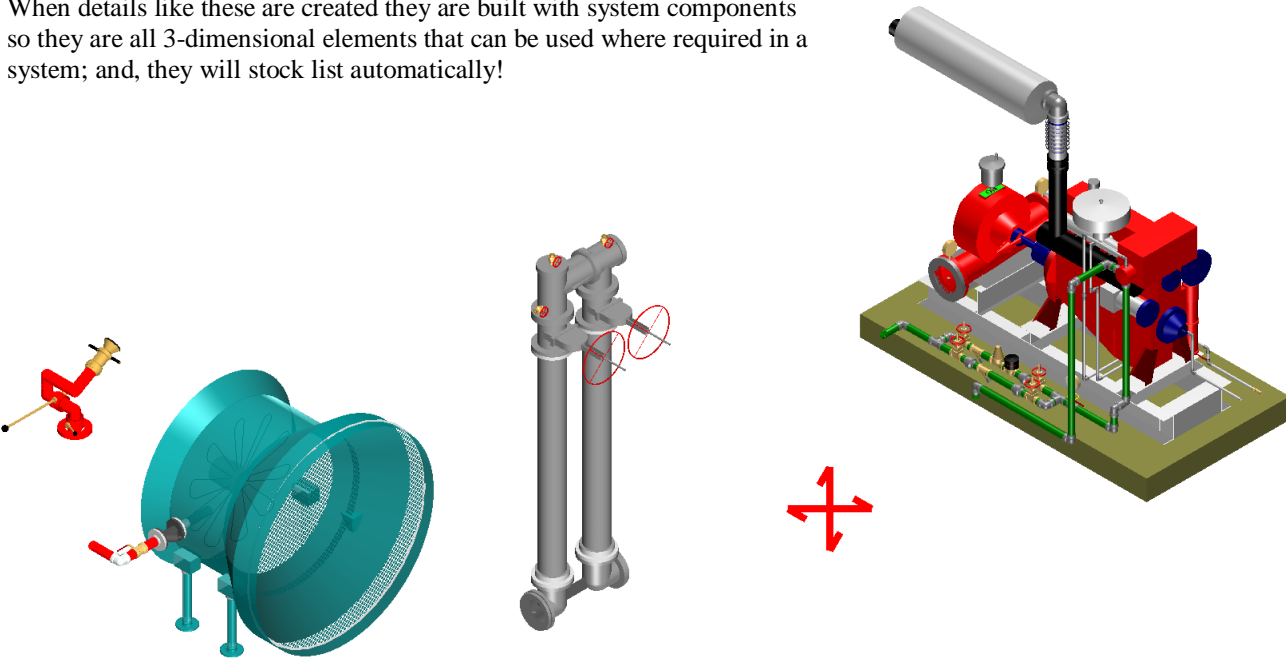
Although there are thousands of commonly used sprinkler system components already in the AutoSPRINK database, there are always new products being made available; and there are occasions where a job requires a fabricated fitting or other uncommon component. With AutoSPRINK's user-friendly database interface almost any part can easily be added and the program will automatically display the component and use it like any other part!



## Build detailed components that stock list

There are hundreds of pre-build details already in the Parts Tree for your use or modification. These details will show you how to easily build any specialty detail that you need such as a: hose Monitor assembly, Foam Generator, N-Style Backflow Preventer, Fire Pumps or whatever.

When details like these are created they are built with system components so they are all 3-dimensional elements that can be used where required in a system; and, they will stock list automatically!



Quantity	Size	Description
<b>Detail</b>		
1	6	Febco Fig 870v N-Style
1	6	Febco Fig. 876v - Base Elbow Assembly



Details can be created and placed within the drawing, which can have a complete list of material associated with them, and AutoLIST will then provide a detailed list of equipment or material required for their installation.

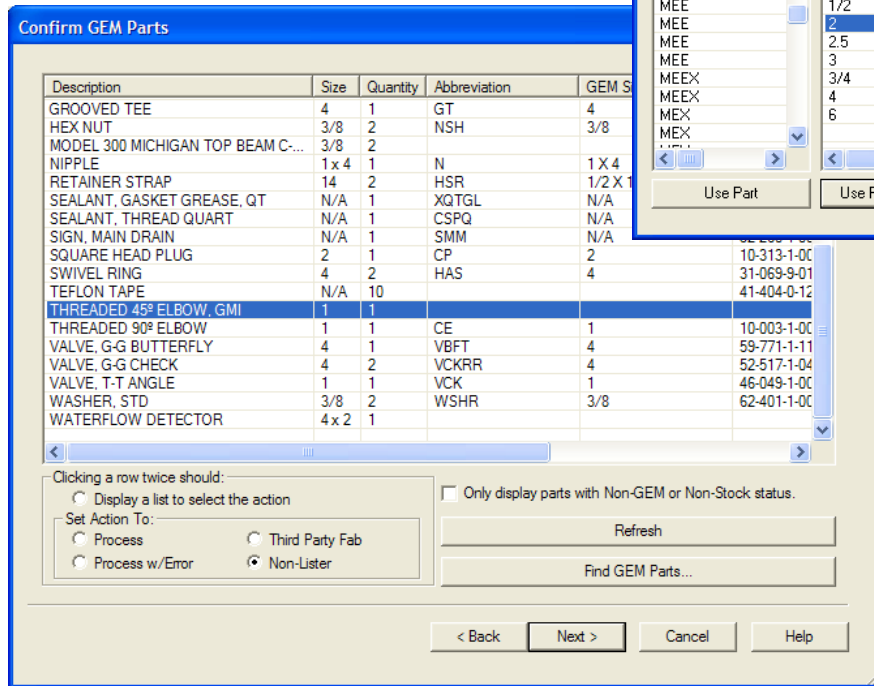
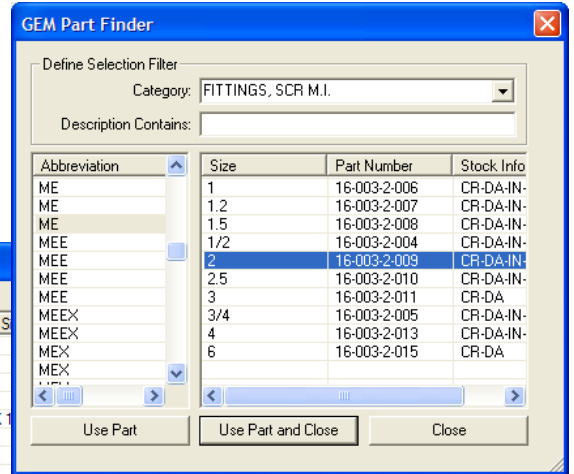
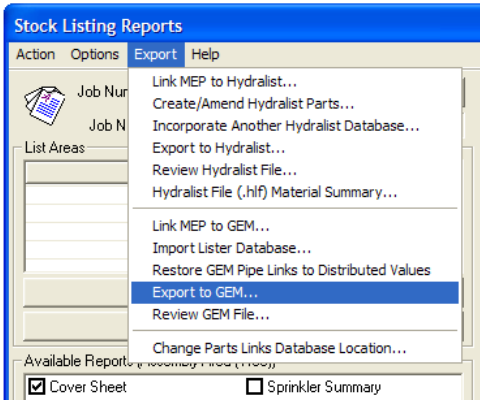
The screenshot shows three overlapping dialog boxes from a software application:

- Properties**: A background dialog with tabs for Stretch Box, Element, General, Detail, Material, Listing, and Group. It contains a note: "Material can be added by lists to be picked up during Listing. Default Material is defined in the Parts Book."
- Material Properties**: A dialog for defining a material list. It includes fields for Description (EQB Stuff-4), Job Type (N/A), and Size (N/A). A table lists parts: EQ Ear, Quick-End (1 of 4), Pipe Clamp (4 of 1), and Pipe, Schedule 40 (1 of 14). It also has fields for Base Cost (\$20.50), Fab Labor Hours (0.1), and Field Labor Hours (1.25).
- Trim Kit Item**: A dialog for defining a trim kit. It includes a checked option "Reference the Parts Book for this Trim Kit Item." and dropdown menus for Manufacturer (Generic), Category (Pipe), Sub-Category (Schedule 10), and Sub-Type (Standard). It also has fields for Description (Pipe, Schedule 10 (24'-0)), Size (1), and Quantity (14).

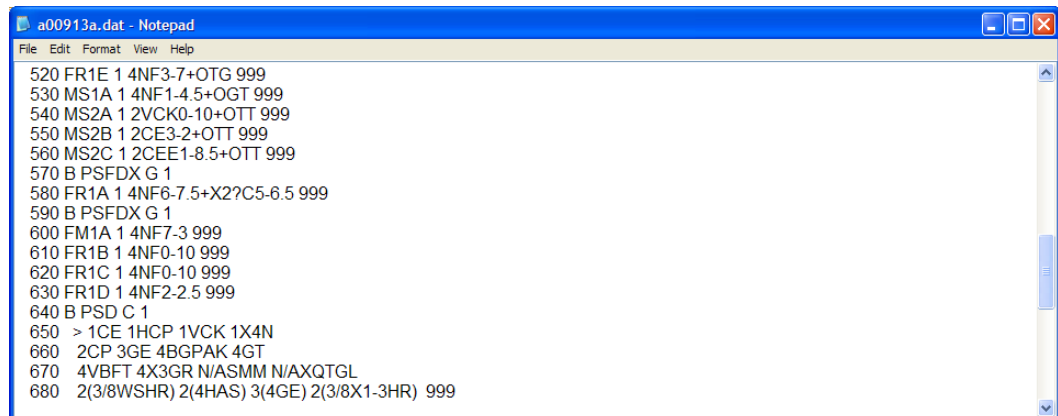
Black-Black		Trim Packages		Current Date
		01.0913a - M.E.P.CAD, Inc. - Training		9/20/2004
		EQB		Date Required
				PO#
Quantity	Size - Part Description			
1	N/A - EQB Stuff-4			
Trim				
1 (1 /Kit)	1 - 4"x 1" Tolco Fast Clamp 1000			
Pipe				
14'-0 /Kit ( 1 )	1 - Pipe, Schedule 40			
Hanger Components				
3 (3 /Kit)	1 - EQ Ear, Quick-End			
1 (1 /Kit)	4 - Pipe Clamp			
1	2 1/2 - EQB Stuff-2 1/2			
Trim				
1 (1 /Kit)	1 - EQ Ear, Quick-End			
1 (1 /Kit)	2 1/2 x 1 - Tolco Fast Clamp			
Pipe				
7'-0 /Kit ( 1 )	1 - Pipe, Schedule 10			
1	2 1/2 - EQB Stuff-2 1/2			
Trim				
3 (3 /Kit)	1 - EQ Ear, Quick-End			
1 (1 /Kit)	2 1/2 - Pipe Clamp			
1 (1 /Kit)	2 1/2 x 1 - Tolco Fast Clamp 1000			
Pipe				
14'-0 /Kit ( 1 )	1 - Pipe, Schedule 10			
1	2 1/2 - EQB Stuff-2 1/2			
Trim				

AutoLIST can even export a stock list to the electronic formats used by GEM Fabricators or shops using HydraLIST software.

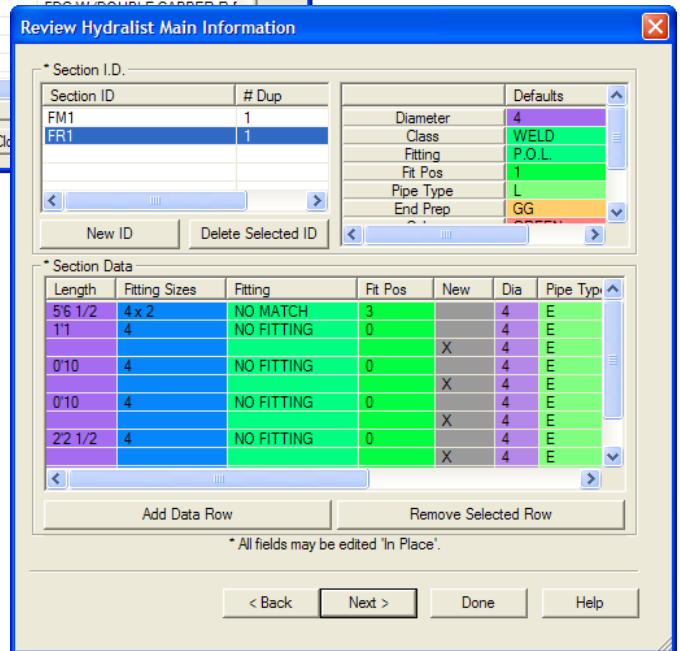
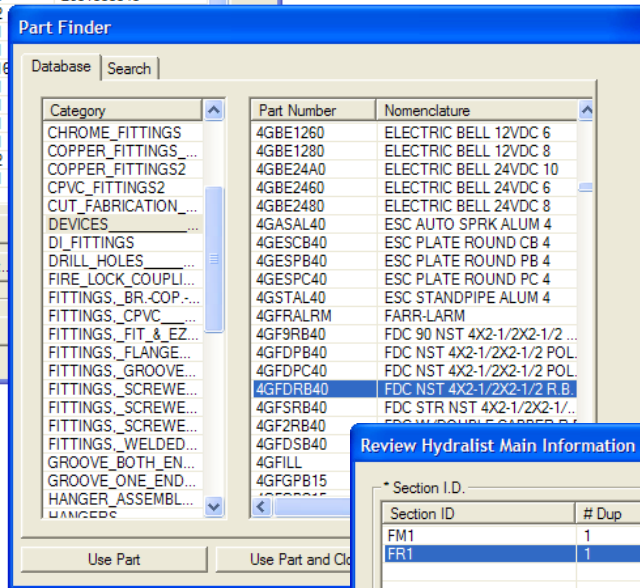
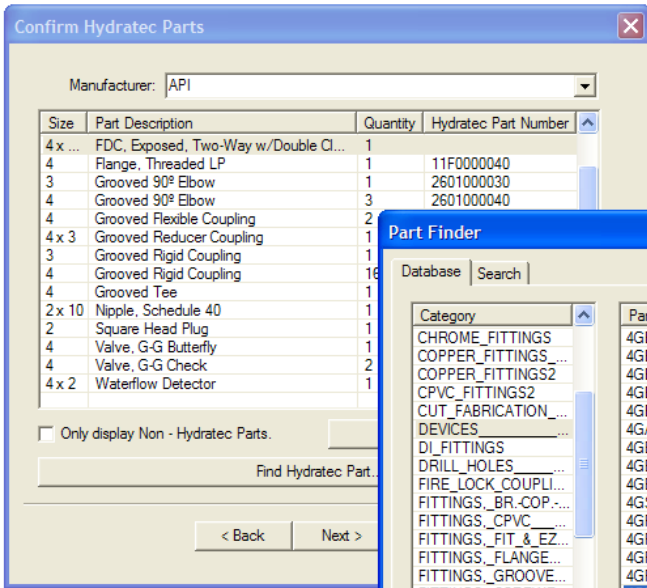
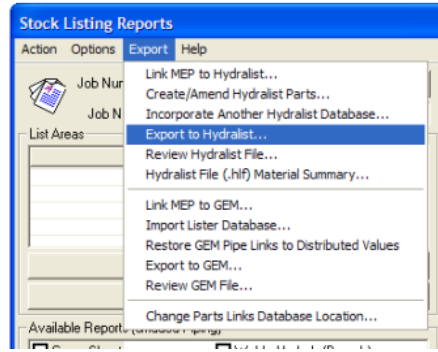
## Export to Gem



Review or edit the electronic dat file before validating it in GemLIST, then email it to the shop.



# Export to HydraLIST



Review or edit the electronic hff file before emailing it to the shop.